

NOVEMBER/ DECEMBER 2024 NWMES NEWSLETTER.

OUR SOCIETY'S VISIT TO JOHN & JAN'S RAILWAY.

Having been to this railway at the start of the year with Martin to conduct a boiler test on John's Forney locomotive, I talked to John about a society visit to his railway, so I promised I would give him as much promotion through our newsletter as I could. Quite a number of members showed an interest in attending this event, so things were looking good.

On the Sunday morning a grand total of four members turned up with a few of John and Jan's friends. The members attending were Brian our new member from Bethel, Tony, Colin and Idris. They were given a great welcome. Having driven the Forney, Brian couldn't wait to complete his 5-inch gauge Stroudley terrier, even though this was a few years away. He heard Idris had a Polly loco for sale, he inspected the loco and the sale was sealed. Pob lwc efo'r peiriant Brian. (Good luck with the loco). A big thanks to John and Jan for giving our members the chance to visit this great railway of yours.



Left photo. Colin in the first coach, Idris acting as guard.

Right photo. Brian, Full steam ahead!

WEST SHORE TRAM SHELTER.

Our friends at West Shore (believe it or not they're called The Friends of West Shore!!) approached our members to see if we could help with some remedial work to this magnificent structure located at West Shore.



They felt we as a society could benefit from the payment and do a better job than some Joe Bloggs taken off the street, not knowing their credentials.

I was told what was involved by Mike Brown but it's quite hard to explain. The construction of this round shelter involved many panels joined together; the seating area being separated into four different segments around its circumference. If you walk in through the rather ornate doors, you'll see another four bench seats, again at ninety degrees to one another. I've never taken any interest in Bus shelters before but I can thoroughly recommend you visiting this Tram Shelter. As we all know exposure to the elements for about ninety years at West Shore can take its toll on any metal structure. Again, a big thanks to CTS (Rhyl) for their assistance.

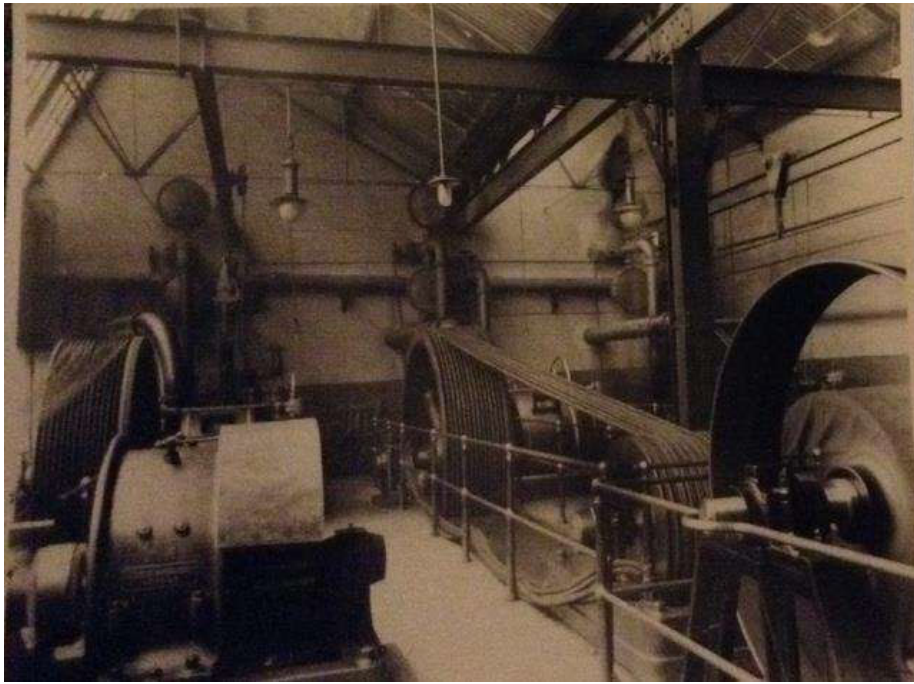
This was quite a major task and was completed to everyone's satisfaction. I'm not sure how many members were involved so I won't start naming who was there in case I miss someone's name. You know who you are, so a big thanks to you all from the committee and especially Phil our Treasurer.



The shelter can be seen to the right of the tram. Not sure of the date but looking at the car in the background I would suggest mid-50's.

Whilst I'm writing about Colwyn Bay and Llandudno trams. This next photo was given to me about twenty years ago by one of our members, - Eric Lander.

It shows one of the D.C. electricity supply points for the Llandudno & Colwyn Bay Electric Railway and what I imagine is an AC motor driving a DC generator. This Tramway (or correctly called Electric Railway) ran from Llandudno West shore, along Mostyn Street, over the Little Orme, along to Rhos on Sea, Colwyn Bay and ending up half way up the hill next to the Queen's Hotel in Old Colwyn.



I have no real proof, but having worked for the local electricity board on the high voltage system, there was evidence of these supply points at the Llandudno Town Hall Car Park substation, Rhos on Sea substation next to the old BRS site. (this site used to have tram rails still in the concrete floor, they could still be there.). The final site being at Ivy Street, Colwyn Bay, opposite the old Woolworth's store.

Does any member know if the local tramway society is still in existence?

At one time they had restored a tram body and would tow it to various events on a trailer. This could be an attraction at our charity day maybe?

SIGNAL BOX REFURBISHMENT.

This project is carrying on. The weathered wood panels are a thing of the past. These have been replaced using UPVC material and are looking brilliant.

At the moment a few of our members are in the process of removing the glass panels and replacing them with plastic panels. They might not be quite as attractive as the original glass panels, hopefully we'll spend less time maintaining the structure, and more time operating our models.



This photo was taken whilst the signal box was being erected. From left to right. Bob, Shaun and Eifion Davies. Shaun is the only present member and as can be seen, he's survived quite a bit better than the signal box. He's one of our ever-present members at West Shore and is very much appreciated for his contribution. Whilst I was reading a Meccano Magazine (1948) one evening this advert reminded me of our signal box and my childhood.

This Signal Box is one of the many models made from a No. 2 Bayko Set

ASK YOUR DEALER FOR DETAILS OF

BAYKO

REGISTERED TRADE MARK
the Original Plastic BUILDING SETS

PRICES:

No. 0 .. 13/9	No. 0x .. 6/10
No. 1 .. 20/7	No. 1x .. 13/9
No. 2 .. 34/4	No. 2x .. 20/7
No. 3 .. 55/-	

PLIMPTON ENGINEERING Co. Ltd.
GIBRALTAR ROW, LIVERPOOL 3

I'm not sure if Bayko was earlier than Lego. To construct a building, you would insert steel pins into holes on a plastic base, then drop the bricks which had small holes to match the pins.

To be honest, the pins could be quite dangerous for young children, personally I had no problems with them as a five year old child.

The Bayco and my Meccano sets were hand me downs. Someone must have asked Jones the Policeman if his children wanted these. They turned up in three travel cases (two Meccano and one Bayco). At the end of the day the only rules we had were, - tidy up and keep them all in their cases.

HEAD SCRATCHING.

During one of my recent visits to Cardiff, I noticed a steel drawer cabinet in the IKEA store that could be useful for storing important documents at our clubhouse. (Useful telephone numbers, insurance certificates, underground services drawings etc.) I contacted the committee and was given the go ahead to purchase one. At £35:00, I thought it was very reasonable.

Having removed the parts from the packaging one Wednesday morning, three of our members set about constructing the cabinet.



The three wise men following a bit of head scratching. L to R. Shaun, Colin and Brian.

OUR ANNUAL CHRISTMAS DINNER.

Another very successful evening at Conwy Golf Club. Everyone in attendance enjoyed the excellent food, the only complaint was the weather! A storm was brewing in the Atlantic, and was due to hit the mainland that evening. We sadly missed a few members who heeded the warnings of not travelling unless, unless you had to.

CLUBHOUSE.

Most, if not all of you know our existing clubhouse has succumbed to the West Shore weather conditions. It must be about twenty-five years old (at least) so it hasn't done too bad. Presently, we don't have a positive date for the big change, but it is imminent.

As part of this very complicated operation, it was decided we require an additional steel container to store the equipment stored in the rear room of our clubhouse, also our furniture during transition.

Our new storage container has arrived, and has been positioned adjacent to the original. The original having been rotated through ninety degrees.

We all can't wait for our new clubhouse, expected on s↑te.....very soon.!

CRAIG V DON MODEL RAILWAY EXHIBITION.



On the 23rd November our society attended a Model Railway Exhibition at Craig y Don Community Centre. Our intention was to show the community what we are all about. Having been given a 6 foot long table, we weren't sure if it would take the weight of our larger models. It was decided we would exhibit one five-inch gauge loco (Brian's O 4 0 Polly loco), and to minimize the risk, the other two locos were slightly smaller. Tony's gauge 1, Prince of Wales 4-6-2 tank loco and my 3 ½" gauge Molly. (LBSC's Jinty).

During the whole day we had a laptop showing a driver's eye view of Dennis's Royal Scot running around our track. This proved very popular with the public.

The organizers looked after our members brilliantly starting off with a bacon or sausage bap and a drink. Mid-morning a drink and biscuits. Later we were given a lunch pack and mid afternoon another drink and biscuits.

These little railway layouts are completely different to our form of modelling. I was very intrigued by the landscapes; I described this to someone as another form of artwork. Electronics was another element in constructing these layouts.

As for the locomotives and rolling stock, I know these have increased in prices, but you pay for what you get. The detail is just out of this world.

If you're just beginning, I was told you can always buy secondhand.

I think the most of you know, I am a bit of a Petrol Head especially when it comes to older cars, so this layout below certainly caught my eyes.



And I also have a very soft spot for Austin Sevens. The vehicles on show, - an early 20's Austin 7 Chummy, a 1930's Austin 7 van along with an AA motor cycle combination and the location is Tan y Bwlch station on the FFestiniog Railway.

At the end of the day the members present thought it had been a very worthwhile exercise with many of the people visiting our stall having no idea that we had a track at West Shore. I can see us having thousands more passengers next year!!!

I've really struggled this month, scraping the barrel as to what to write, especially knowing you're all very busy in your workshops involved with different projects. Can you all, please take a few minutes to let me know what you're up to, so I can pass it on to our members.

I wish you all a very Merry Christmas, and the Happiest of New Years.

Harold.