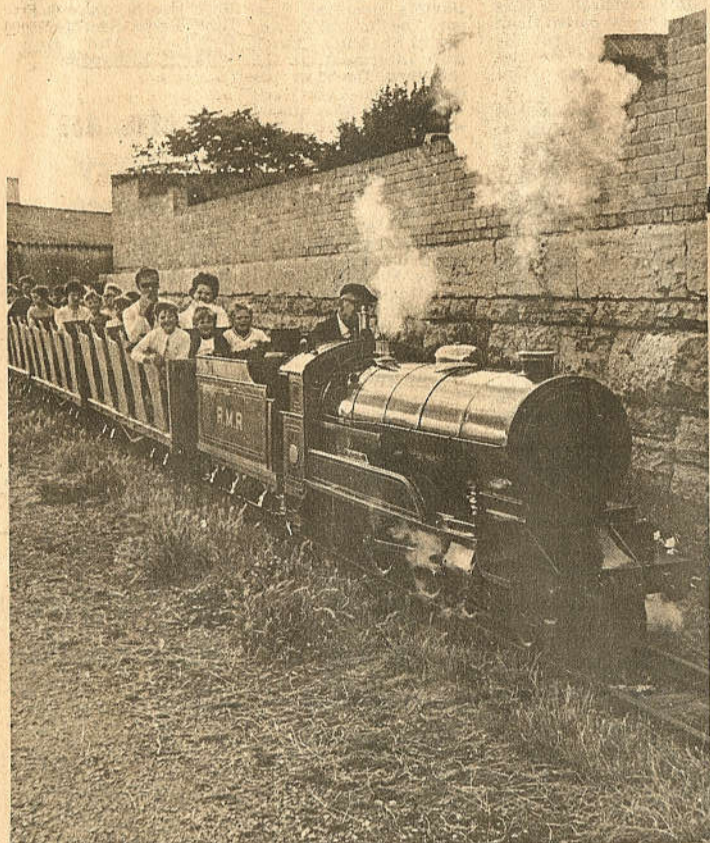
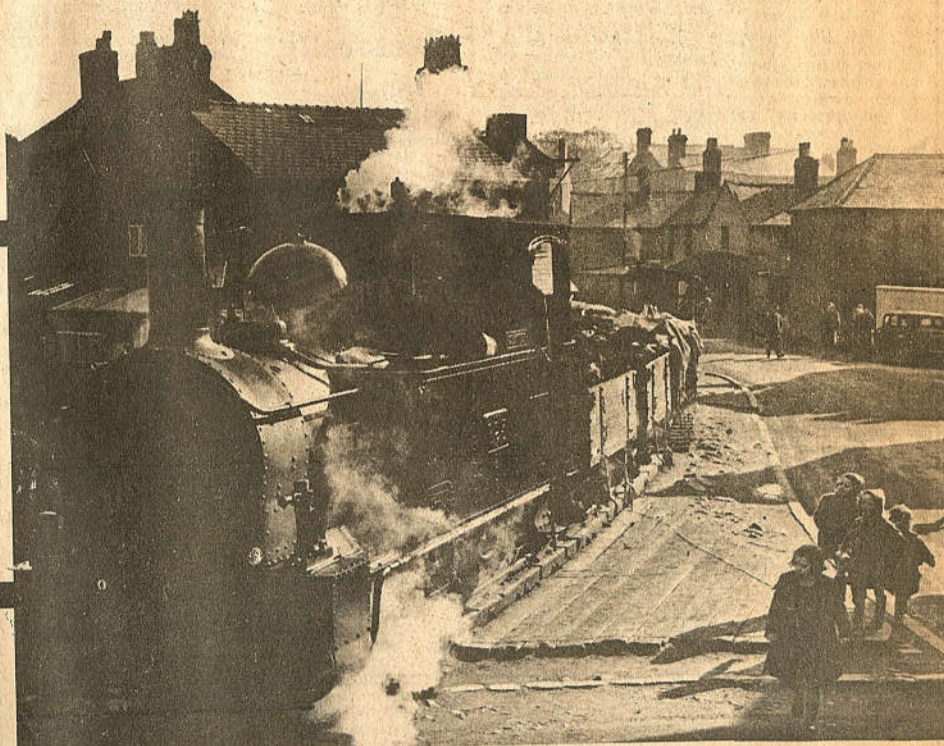


Puffed with pride and plenty of steam

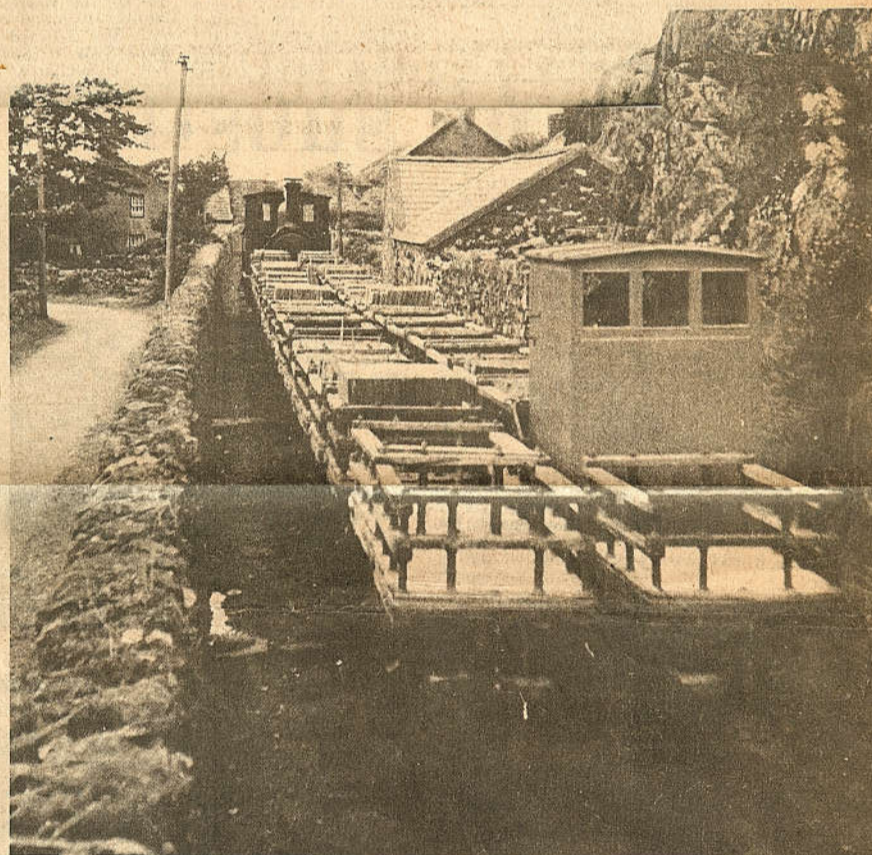


Photographer and lifelong devotee of steam, Geoffrey Charles, has sifted through his files to present this page full of nostalgia for those of you who still think that proud puffers marked the heyday of the railways. The diesel engines may be far faster than anything shown here but the advantages they gain in speed are offset by the absence of personality.



"Countess" was a mixed train for all stops between Welshpool and Llanfair Caereinion. Housewives in Welshpool ran out to bring in their washing lest the smoke dirtied it.

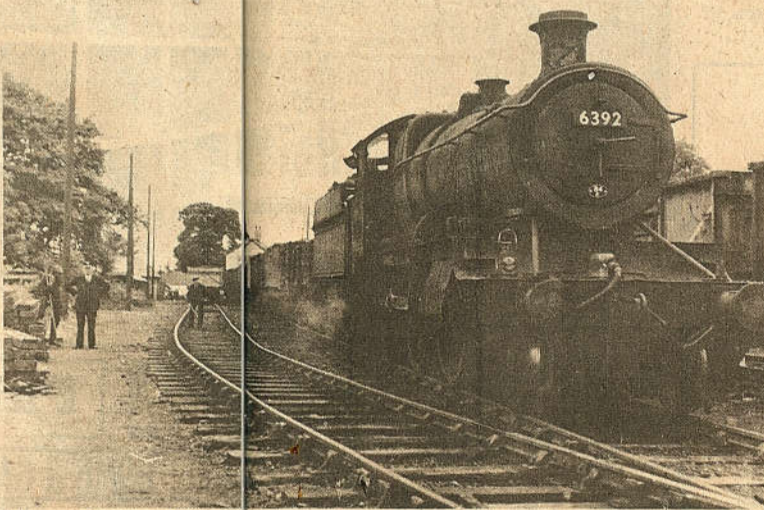
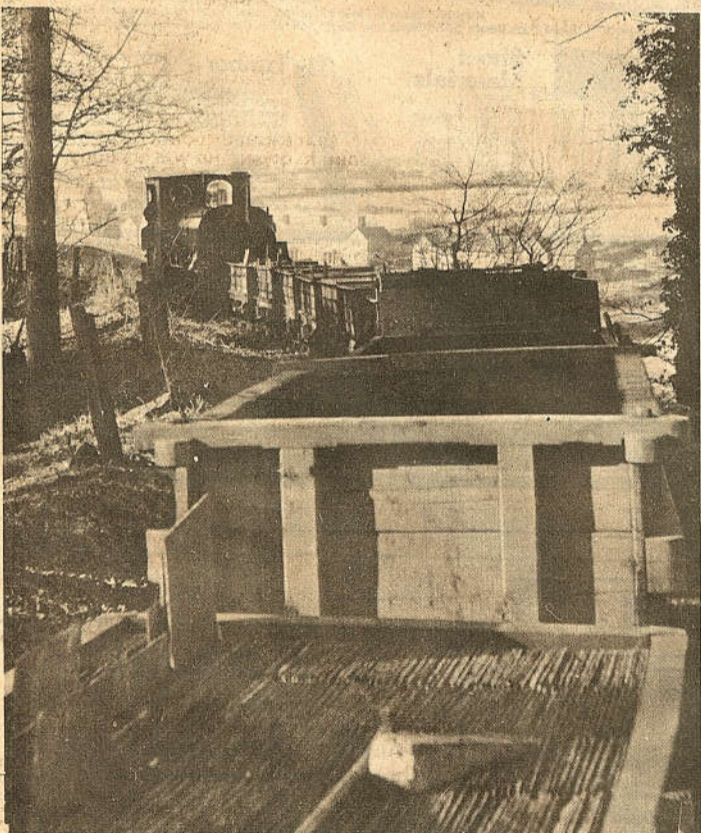
Generations of North Wales children loved this 4-2-4 engine of 15 inches gauge that ran around Rhyl's Marine Lake - alas, no more.



Above: A Webb 0-6-2 coal tank on its way to Brymbo Station in 1935.

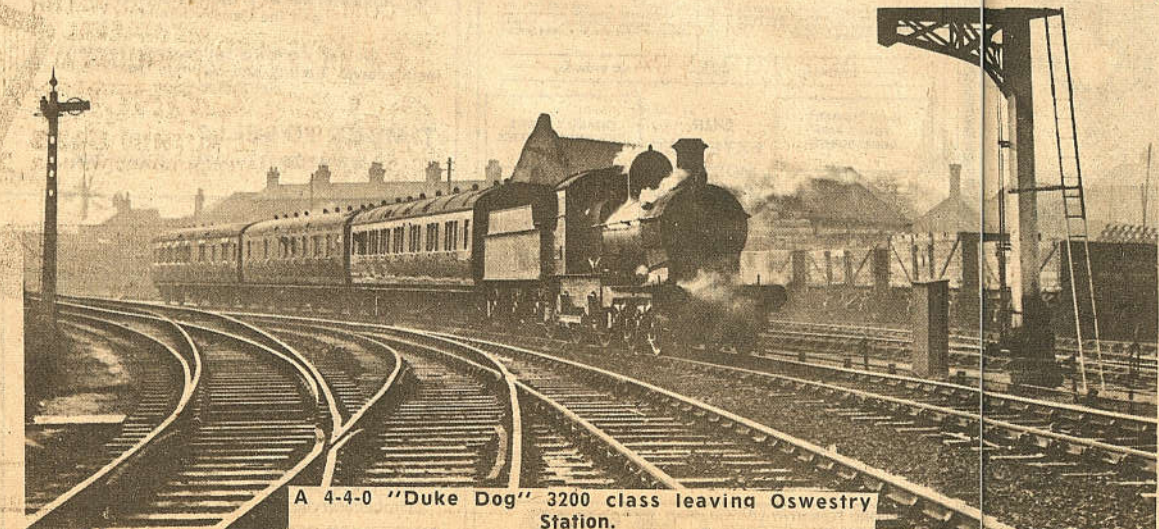
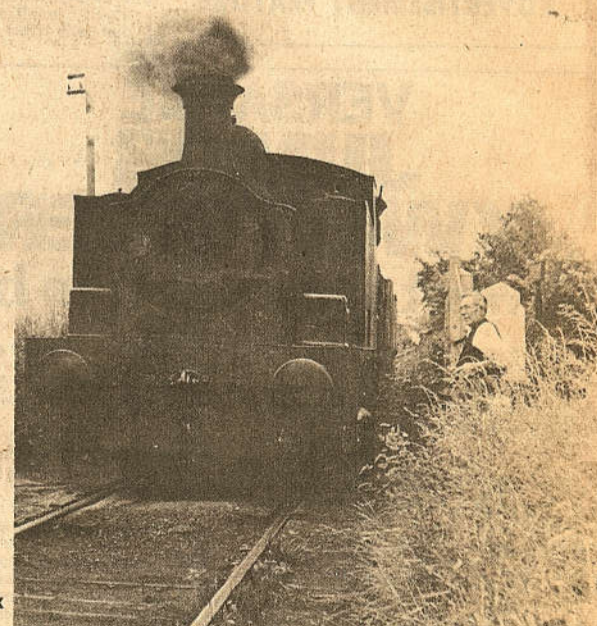
Left: "Blanche" (now working on the Ffestiniog railway) drawing a slate train from Penrhyn Quarry to Port Penrhyn.

Right: The unique 4 ft. gauge Padarn railway at Llanberis.

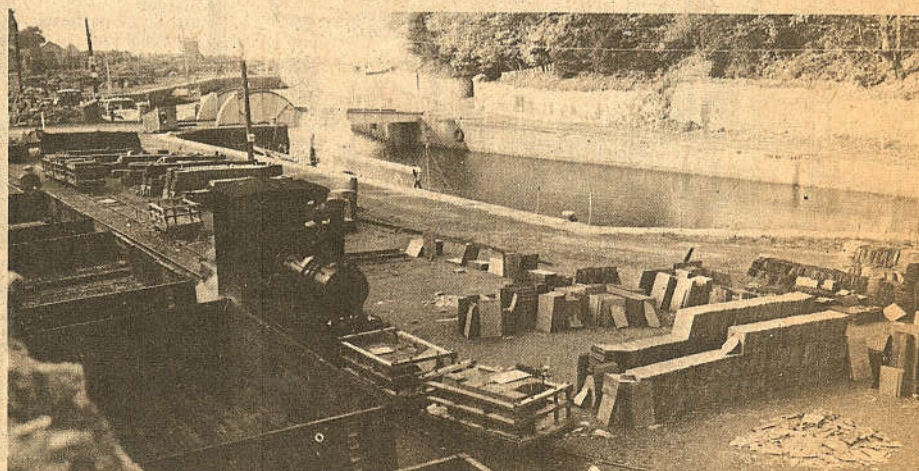


Above: An ex-GWR 2-6-0 with a coal train loaded at Ifton Colliery waiting at the main line Weston Rhyn Station.

Right: The 0-6-0 outside cylinder tank engine on its way to Weston Rhyn.



A 4-4-0 "Duke Dog" 3200 class leaving Oswestry Station.



A Barclay well-tank 0-4-0 shunting slate wagons on the quay at Port Dinorwic.